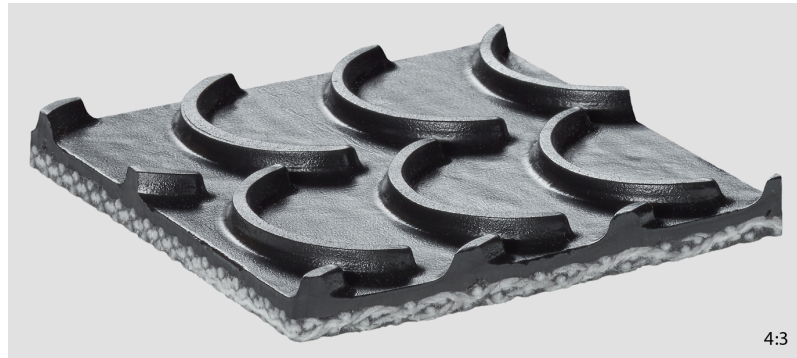


Product Data Sheet

PVC150 P CTxB-NA black



Art. No.: 908770

M 1:2

Applications

| | |
|----------------------------------|-------------------------------------------------------------------------------|
| Agriculture | Harvesting machines |
| General material handling | Horizontal conveying and inclined conveying of small components / bulky goods |

Order information

| | |
|-------------------------------------------|----------------------|
| Article number | 908770 |
| Suitable for corrugated side walls | No |
| Belt style | PVC = Interwoven PVC |
| Standard delivery width | 1829 mm / 72.01 in |
| Longitudinal seam possible | Yes |

PVC150 P CTxB-NA black

Construction

| | |
|--------------------------------|---------------------------------------------------------|
| Top face material | Polyvinyl chloride |
| Surface pattern | Crescent top |
| Coating thickness | 5.08 mm / 0.2 in |
| Color | Black |
| Driving face material | Polyester fabric, brushed |
| Surface pattern | Fabric, coarse |
| Color | Black |
| Tension member material | 2-ply interwoven fabric of polyester spun warp and weft |
| Number of fabric plies | 1 |

Technical data

| | |
|-----------------------------------------------------------------------------------------------------|---------------------------------------------------------------------------|
| Total thickness | 6.6 mm \pm 0.25 0.26 in \pm 0.01 |
| Weight | 5.13 kg/m ² \pm 0.51 1.05 lbs/ft ² \pm 0.105 |
| k1% value relaxed (effective pull at 1% elongation), established in line with ISO 21181:2005 | 8.5 N/mm / 48.54 lbf/in |
| Recommended Elongation at fitting min. | 0.5 % |
| Recommended Elongation at fitting max. | 1.5 % |
| Rated working tension | 26 N/mm / 150 lbf/in at 2 % Elongation |
| Friction coefficient of driving face against steel panel according ISO 21182 | 0.35 |
| Permissible operating temperature | -18/82 °C 0/180 °F |
| Hardness of top face coating as per DIN 53505 (Shore A) | 65 |

PVC150 P CTxB-NA black

Properties

| | |
|----------------------------------|---------------------------------------|
| Lateral stiffness | Laterally flexible |
| Troughable | Yes |
| Suitable for accumulation | No |
| Inclined conveying | Yes |
| Suitable for knife edges | No |
| Suitable for curves | No |
| Flame-retardant | No |
| Noise development | Normal |
| Belt support | Slider bed (support rollers possible) |
| UV resistance | Normal |

Electrostatic properties

| | |
|-----------------------|-------------------------------------------------------|
| Not antistatic | Belt material with electrically insulating properties |
|-----------------------|-------------------------------------------------------|

Fabrication

| | |
|-------------------------------------------|------------|
| Suitable for corrugated side walls | No |
| Profiles on top face | On request |
| Profiles on underside | Yes |
| Mechanical fasteners | On request |

Minimum drum diameter

| | |
|--------------------------------------------------|--------------|
| Z- splice - 70 x 11,5 mm, counter-bending | 76 mm / 3 in |
| Stepped overlap splice, counter-bending | 76 mm / 3 in |

Remarks

| | |
|----------------------------|------|
| Chemical resistance | Good |
|----------------------------|------|

The physical data in this data sheet is approximate, can alter depending on production environments and was established at standard ambient conditions (23°C/73°F, 50% relative humidity) in accordance with DIN 50014/ISO 554. Fluctuations in climate can cause variations.

Date of last change: 3/12/2024 10:38:30 AM