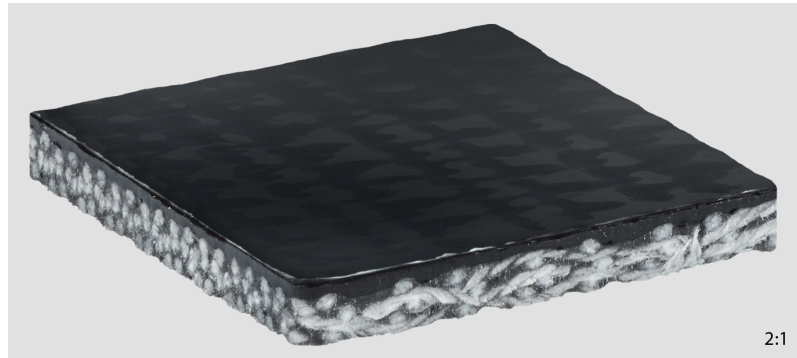


Product Data Sheet

PVC250 P CxB-NA black



2:1

Art. No.: 908311

M 1:2

Applications

| | |
|----------------------------------|---|
| Agriculture | Harvesting machines |
| General material handling | Horizontal conveying (metering); Waste conveyor, recycling conveyor |
| Logistics | |
| Tyre industry | |
| Wood industry | Board conveying |

Order information

| | |
|---|----------------------|
| Article number | 908311 |
| Suitable for corrugated side walls | On request |
| Belt style | PVC = Interwoven PVC |
| Standard delivery width | 1829 mm / 72.01 in |
| Longitudinal seam possible | Yes |

PVC250 P CxB-NA black

Construction

| | |
|-------------------------|---|
| Top face material | Polyvinyl chloride, hard |
| Surface pattern | Smooth |
| Coating thickness | 1.19 mm / 0.047 in |
| Color | Black |
| Driving face material | Polyester fabric, brushed |
| Surface pattern | Fabric, coarse |
| Color | Black |
| Tension member material | 3-ply interwoven fabric of polyester spun warp and weft |
| Number of fabric plies | 1 |

Technical data

| | |
|--|---|
| Total thickness | 5.84 mm \pm 0.25 0.23 in \pm 0.01 |
| Weight | 6.84 kg/m ² \pm 0.68 1.4 lbs/ft ² \pm 0.14 |
| k1% value relaxed (effective pull at 1% elongation), established in line with ISO 21181:2005 | 12 N/mm / 68.52 lbf/in |
| Recommended Elongation at fitting min. | 0.5 % |
| Recommended Elongation at fitting max. | 1.5 % |
| Rated working tension | 44 N/mm / 250 lbf/in at 2 % Elongation |
| Friction coefficient of driving face against steel panel according ISO 21182 | 0.35 |
| Friction coefficient of top face against steel panel according ISO 21182 | 0.8 |
| Permissible operating temperature | -18/82 °C 0/180 °F |
| Hardness of top face coating as per DIN 53505 (Shore A) | 80 |

PVC250 P CxB-NA black

Properties

| | |
|-------------------------------|---------------------------------------|
| Lateral stiffness | Laterally flexible |
| Troughable | Yes |
| Suitable for accumulation | No |
| Inclined conveying | No |
| Suitable for knife edges | No |
| Suitable for curves | No |
| Flame-retardant | No |
| Noise development | Normal |
| Particular surface properties | ► Good grip |
| Belt support | Slider bed (support rollers possible) |
| UV resistance | Normal |

Electrostatic properties

| | |
|----------------|---|
| Not antistatic | Belt material with electrically insulating properties |
|----------------|---|

Fabrication

| | |
|------------------------------------|------------|
| Suitable for corrugated side walls | On request |
| Profiles on top face | Yes |
| Profiles on underside | Yes |
| Mechanical fasteners | On request |

Minimum drum diameter

| | |
|---------------------------|---------------|
| Z-splice, counter-bending | 126 mm / 5 in |
|---------------------------|---------------|

Remarks

| | |
|---------------------|------|
| Chemical resistance | Good |
|---------------------|------|

The physical data in this data sheet is approximate, can alter depending on production environments and was established at standard ambient conditions (23°C/73°F, 50% relative humidity) in accordance with DIN 50014/ISO 554. Fluctuations in climate can cause variations.

Date of last change: 3/12/2024 10:38:30 AM