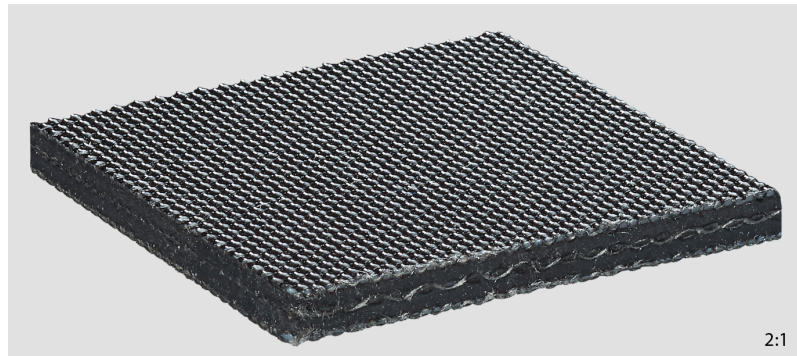


Product Data Sheet

PHR3-135MF BBxBB-NA black FR



Art. No.: 908208

M 1:2

Applications

General material handling	Horizontal conveying (metering)
Logistics	Accumulation conveyor; Collecting conveyor; High speed conveyor; Parcel handling; Pusher conveyor
Metalworking & automotive industry	
Paper & corrugated cardboard industry	
Plastics / Chemical /Electronics industry	
Tyre industry	Batch-off; Mixing belt, check-weigher belt; Quality control / storage; Rubber extrusion & cooling

Order information

Article number	908208
Suitable for corrugated side walls	No
Belt style	PHR = Package Handling Rubber
Standard delivery width	1829 mm / 72.01 in
Longitudinal seam possible	No

PHR3-135MF BBxBB-NA black FR

Construction

Top face material	Resorcinol formaldehyde latex impregnation
Surface pattern	Fabric
Color	Black
Driving face material	Resorcinol formaldehyde latex impregnation
Surface pattern	Fabric
Color	Black
Tension member material	Fabric of polyester filament warp and monofilament weft
Number of fabric plies	3
Driving face weave	Plain weave

Technical data

Total thickness	3.94 mm \pm 0.39 0.155 in \pm 0.016
Weight	4.59 kg/m ² \pm 0.46 0.94 lbs/ft ² \pm 0.094
k1% value relaxed (effective pull at 1% elongation), established in line with ISO 21181:2005	8 N/mm / 45.68 lbf/in
Recommended Elongation at fitting min.	0.3 %
Recommended Elongation at fitting max.	1.5 %
Rated working tension	24 N/mm / 135 lbf/in at 2 % Elongation
Friction coefficient of driving face against steel panel according ISO 21182	0.2
Friction coefficient of top face against steel panel according ISO 21182	0.2
Permissible operating temperature	-29/107 °C -20/225 °F
Hardness of top face coating as per DIN 53505 (Shore A)	60

PHR3-135MF BBxBB-NA black FR

Properties

Lateral stiffness	Exceptionally laterally stiff
Troughable	No
Suitable for accumulation	Yes
Inclined conveying	No
Suitable for knife edges	No
Suitable for curves	No
Flame-retardant	FR (ASTM D-378)
Noise development	Normal
Particular surface properties	<ul style="list-style-type: none"> ▸ Coating/fabric abrasion resistant ▸ Not adhesive
Belt support	Slider bed (support rollers possible)
UV resistance	Improved

Electrostatic properties

Not antistatic	Belt material with electrically insulating properties
-----------------------	---

Fabrication

Suitable for corrugated side walls	No
Profiles on top face	Yes
Profiles on underside	Yes
Mechanical fasteners	CS-06; HS-25

Minimum drum diameter

Wedge overlap splice, counter-bending	126 mm / 5 in
Wedge overlap splice, bending	152 mm / 6 in

Remarks

Chemical resistance	Low
----------------------------	-----

The physical data in this data sheet is approximate, can alter depending on production environments and was

PHR3-135MF BBxBB-NA black FR

established at standard ambient conditions (23°C/73°F, 50% relative humidity) in accordance with DIN 50014/ISO 554. Fluctuations in climate can cause variations.

Date of last change: 3/12/2024 10:38:30 AM