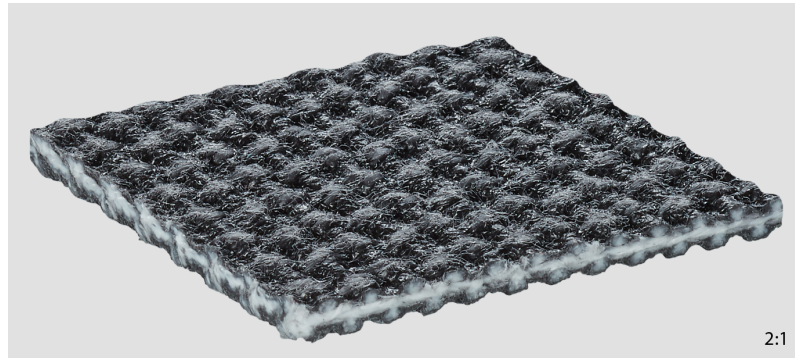


### Product Data Sheet

# PVK125 FSxFS-NA black FR



Art. No.: 908103

M 1:2

### Applications

<b>Airport logistics</b>	
<b>Automotive</b>	Press-in-feed/inter-press conveyors
<b>Building material industry</b>	Application Missing
<b>Glass industry</b>	Flat glass Conveying
<b>Logistics</b>	Accumulation conveyor; Collecting conveyor; Parcel handling; Pusher conveyor
<b>Machinery</b>	Vacuum conveyors
<b>Steel</b>	Magnet conveyors; Metal cutting line/shearing line
<b>Tire/Rubber</b>	Batch-off; Curing; Quality control / storage
<b>Wood industry</b>	

### Order information

<b>Article number</b>	908103
<b>Suitable for corrugated side walls</b>	No
<b>Belt style</b>	PVK = Package Handling PVC
<b>Standard delivery width</b>	1829 mm / 72.01 in
<b>Maximal delivery width (without longitudinal seam) on request</b>	2400 mm / 94.49 in
<b>Longitudinal seam possible</b>	Yes

### PVK125 FSxFS-NA black FR

#### Construction

<b>Top face material</b>	Polyvinyl chloride impregnation
<b>Surface pattern</b>	Fabric, coarse
<b>Color</b>	Black
<b>Driving face material</b>	Polyester fabric, brushed
<b>Surface pattern</b>	Fabric, coarse
<b>Color</b>	Black
<b>Tension member material</b>	Solid woven fabric of polyester spun warp and weft
<b>Number of fabric plies</b>	1

#### Technical data

<b>Total thickness</b>	3.68 mm ± 0.55 0.145 in ± 0.022
<b>Weight</b>	3.42 kg/m <sup>2</sup> ± 0.51 0.7 lbs/ft <sup>2</sup> ± 0.105
<b>k1% value relaxed (effective pull at 1% elongation), established in line with ISO 21181:2005</b>	10.51 N/mm / 60 lbf/in
<b>Recommended Elongation at fitting min.</b>	0.75 %
<b>Recommended Elongation at fitting max.</b>	1.5 %
<b>Rated working tension</b>	21 N/mm / 120 lbf/in at 2 % Elongation
<b>Friction coefficient of driving face against steel panel according ISO 21182</b>	0.23
<b>Friction coefficient of top face against steel panel according ISO 21182</b>	0.28
<b>Permissible operating temperature</b>	-18/82 °C 0/180 °F

### PVK125 FSxFS-NA black FR

#### Properties

<b>Lateral stiffness</b>	Laterally stiff
<b>Troughable</b>	No
<b>Suitable for accumulation</b>	Yes
<b>Inclined conveying</b>	No
<b>Suitable for knife edges</b>	No
<b>Suitable for curves</b>	No
<b>Flame-retardant</b>	FR (ASTM D-378)
<b>Noise development</b>	Normal
<b>Particular surface properties</b>	<ul style="list-style-type: none"> <li>▸ Not adhesive</li> <li>▸ Coating/fabric abrasion resistant</li> </ul>
<b>Coating/fabric exceptionally cut resistant</b>	Yes
<b>Belt support</b>	Slider bed (support rollers possible)
<b>UV resistance</b>	Normal

#### Electrostatic properties

<b>Not antistatic</b>	Belt material with electrically insulating properties
-----------------------	---

#### Fabrication

<b>Suitable for corrugated side walls</b>	No
<b>Profiles on top face</b>	Yes
<b>Profiles on underside</b>	Yes
<b>Mechanical fasteners</b>	CS-06; HS-24; Alligator®RS125; Clipper® #1

### PVK125 FSxFS-NA black FR

#### Minimum drum diameter

<b>Z-splice, counter-bending</b>	76 mm / 3 in
<b>Mechanical Alligator® fastener, bending</b>	76 mm / 3 in
<b>Mechanical Clipper® fastener, bending</b>	38 mm / 1.5 in
<b>Wedge overlap splice, counter-bending</b>	126 mm / 5 in
<b>Mechanical CS fastener, bending</b>	76 mm / 3 in
<b>Mechanical HS fastener, bending</b>	76 mm / 3 in
<b>Wedge overlap splice, bending</b>	89 mm / 3.5 in
<b>Z-splice, bending</b>	38 mm / 1.5 in

#### Remarks

<b>Chemical resistance</b>	V
----------------------------	---

The physical data in this data sheet is approximate, can alter depending on production environments and was established at standard ambient conditions (23°C/73°F, 50% relative humidity) in accordance with DIN 50014/ISO 554. Fluctuations in climate can cause variations.

Date of last change: 10/25/2024 10:50:00 AM