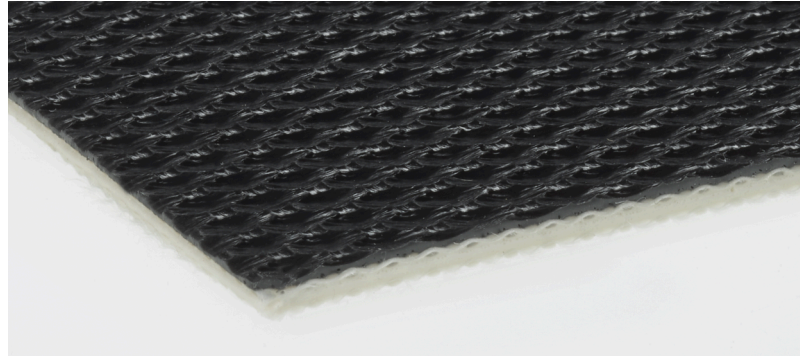


### Product Data Sheet

# E 12/2 U0/V6 GSTR-C-SE

## black



Art. No.: 906495

M 1:2

### Applications

**Airport logistics**

**General material handling**

Curved belt

**Logistics**

Parcel handling

### Order information

**Article number**

906495

**Suitable for corrugated side walls**

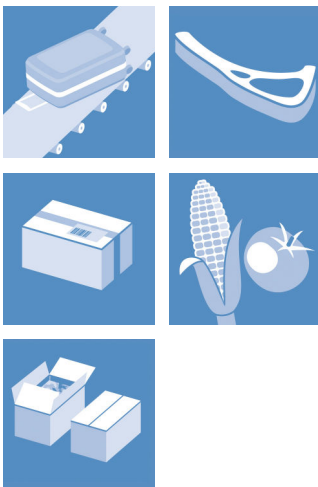
No

**Standard delivery width**

4050 mm / 159.45 in

**Longitudinal seam possible**

Yes



### E 12/2 U0/V6 GSTR-C-SE black

#### Construction

Top face material	Polyvinyl chloride
Surface pattern	Coarse texture
Coating thickness	0.6 mm / 0.024 in
Color	Black
Driving face material	Polyurethane impregnation
Surface pattern	Fabric
Color	Transparent
Tension member material	Laterally flexible fabric of polyester warp and weft
Number of fabric plies	2
Driving face weave	Plain weave

#### Technical data

Total thickness	2.65 mm $\pm$ 0.1 0.104 in $\pm$ 0.004
Weight	2.7 kg/m <sup>2</sup> $\pm$ 0.2 0.553 lbs/ft <sup>2</sup> $\pm$ 0.041
k1% value relaxed (effective pull at 1% elongation), established in line with ISO 21181:2005	3.5 N/mm / 19.99 lbf/in
Recommended Elongation at fitting min.	0.3 %
Recommended Elongation at fitting max.	1 %
Friction coefficient of driving face against steel panel according ISO 21182	0.18
Permissible operating temperature	-15/70 °C, for a short time 90 °C 5/158 °F, for a short time 194 °F
Hardness of top face coating as per DIN 53505 (Shore A)	70

### E 12/2 U0/V6 GSTR-C-SE black

#### Properties

Lateral stiffness	Laterally flexible
Troughable	Yes
Suitable for accumulation	No
Inclined conveying	Yes
Suitable for knife edges	No
Suitable for curves	Yes
Flame-retardant	Flame-retardant according to EN 20340/ISO 340 and ASTM 378-D
Noise development	Normal
Belt support	Slider bed (support rollers possible)

#### Electrostatic properties

Antistatic	Belt material with an electrically conductive antistatic agent. Volume resistance (RDi) in longitudinal direction parallel to plane of belt $< 3 \times 10^8 \Omega$ . Measurement according DIN EN ISO 21178.
------------	--

#### Fabrication

Belt edge sealing	On request
Suitable for corrugated side walls	No
Profiles on top face	Yes
Profiles on underside	Yes
Mechanical fasteners	KS; HS-21; HS-23

#### Minimum drum diameter

Z- splice - 70 x 11,5 mm, counter-bending	30 mm / 1.2 in
Stepped overlap splice - 70mm, counter-bending	60 mm / 2.4 in
Stepped Z-splice, counter-bending	60 mm / 2.4 in
Z- splice - 70 x 11,5 mm, bending	24 mm / 0.9 in

### E 12/2 U0/V6 GSTR-C-SE black

#### Remarks

Chemical resistance	V
---------------------	---

The physical data in this data sheet is approximate, can alter depending on production environments and was established at standard ambient conditions (23°C/73°F, 50% relative humidity) in accordance with DIN 50014/ISO 554. Fluctuations in climate can cause variations. See our brochure "Technical Information 1" no. 317 which shows the types of belts that can be supplied and the manufacturing tolerances. Customised types require written confirmation.

Date of last change: 11/21/2023 1:14:55 PM